



Queens Chess Club Championship Round 5



Welcome to the 2013 Queens Chess Club Championship!!

The time control is **game in 2 hours**. Because this tournament is FIDE-rated, we do not reduce the control in minutes by the number of seconds of time delay, so with a delay clock the control is still game in 2 hours (or 120 minutes, depending on what clock you have), with a five second time delay. A delay clock is preferred. Please bring sets and clocks.

Our normal seating arrangement is to face all clocks toward the center aisle. The TD needs to be able to see the clock.

We no longer enforce Rule 14H, which allows a player in time pressure in a game without time delay to request a delay clock, claiming no losing chances. We no longer allow this because our directors are also participating as players. If a game starts at 8:15 with an analog clock, that clock will not be replaced or exchanged unless it dies during the game (and even so, will be replaced with the same type of clock if possible). We recommend that you be on time. If either player has fewer than five minutes remaining, neither player is required to keep score any longer, but a complete score is still required to claim a threefold repetition of position, unless a TD happens to have been present for all three appearances of the position at the time of claim.

Up to three half point byes are permitted, but these must be locked in before round 4 (Nov 1).

Players with identical USCF regular ratings will be ranked in order of their FIDE ratings.

In the last round, if two players with the same score who must be paired against each other have had identical color histories, color will be decided by lot (coin flip, choose a hand, etc.)

Please mark your result on the pairing sheet as soon as your game is over. If you want to analyze your game, you must go to another table that doesn't have any tournament games on it, but there is still no talking permitted until **all** tournament games are over (we will close within 15 minutes of the last game finishing). We are hoping to find another site with a second room in the near future but we have been looking for over 1 year without success.

We will be using carbon score sheets and will prepare weekly bulletins to be posted online. Please turn in your score sheets to Brian Lawson.

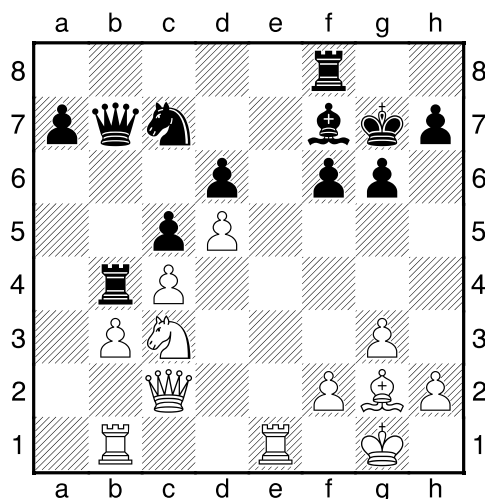
We will attempt to have the next round's pairings posted by Tuesday (they will not be absolute, especially for Rounds 2-4 when new players can enter or byes taken).

Have fun and play well !!

(49) Denig,Paul (1624) – Kan,Andrew (1859) [A86]

Queens Chess Club Championship (5), 08.11.2013
[Houdini 3]

1.d4 f5 2.c4 Nf6 3.Nc3 d6 4.g3 g6 5.Bg2 Bg7 6.e4 fxe4 7.Nxe4 c6 8.Ne2 Na6 9.0-0 0-0 10.a3 Nc7 11.Be3 Rb8 12.N2c3 Bd7 13.Nxf6+ exf6 14.Qd2 Be8 15.Rae1 Bf7 16.b3 b5 17.d5 c5 18.Bh6 b4 19.axb4 Rxb4 20.Bxg7 Kxg7 21.Qc2 Qb8 22.Rb1 Qb7 23.Rfe1 Diagram

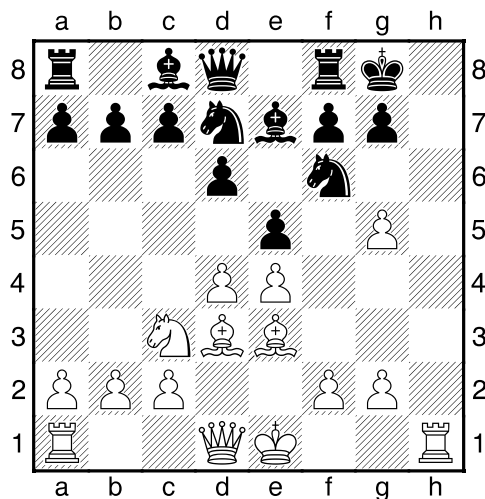


23...Re8 [23...Rb8 24.Ne4 Ne8 25.Nd2 a5] 24.Ne4 Qb6 25.Qc3 Re5 26.f4 Rf5 27.Bh3 Nxd5 28.cxd5 Bxd5 29.Bxf5 gxf5 30.Qxf6+ Kg8 31.Nf2 Qc6 32.Re7 Bh1 33.Qg7# 1-0

(50) Mordukhay,Mikhail (1576) – Fennel,Yvette (1216) [B07]

Queens Chess Club Championship (5), 08.11.2013
[Houdini 3]

1.e4 d6 2.d4 Nf6 3.Bd3 Nbd7 4.Nf3 e5 5.Be3 Be7 6.Nc3 0-0 7.Ng5 h6 8.h4 hxg5 9.hxg5 Diagram

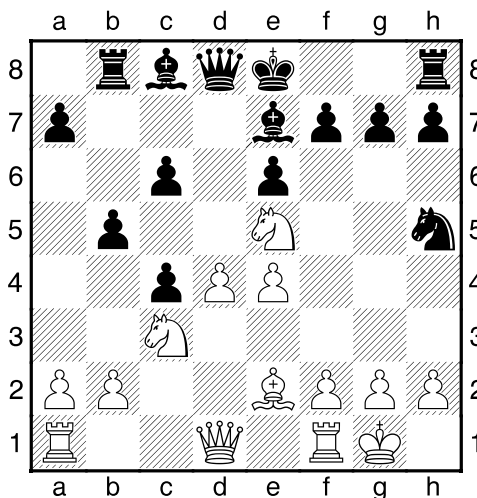


9...Nb6 [9...g6 10.gxf6 Bxf6] 10.gxf6 Bxf6 11.Qh5 1-0

(51) Lawson,Brian (2000) – Drazil,Frank (1608) [D31]

Queens Chess Club Championship (5), 08.11.2013
[Houdini 3]

1.d4 d5 2.c4 e6 3.Nc3 c6 4.Nf3 Be7 5.Bf4 dxc4 6.e4 b5 7.Be2 Nf6 8.0-0 Nh5 9.Bxb8 Rxb8 10.Ne5 Diagram



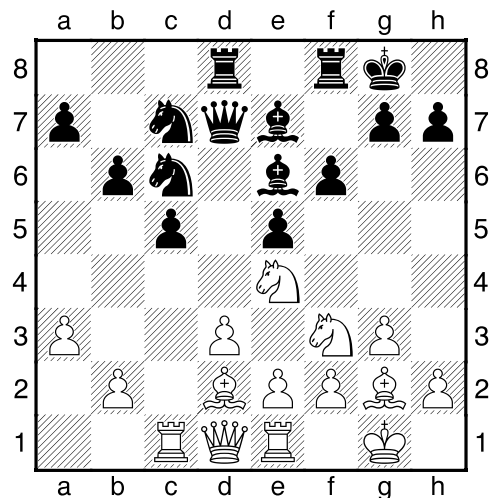
10...Qd6 [10...Nf4 11.Nxc6 Qd6 12.Nxb8 Qxb8] 11.Bxh5 g6 12.Be2 f6 13.Nf3 Bb7 14.e5 Qc7 15.exf6 Bxf6 16.Ne4 0-0 17.Nfg5 Bxg5 18.Nxg5 Qe7 19.Qd2 Rbd8 20.Qe3 Rf6 21.Bg4 Rd6 22.Ne4 e5 23.Nxd6 Rxd6 24.Qxe5 1-0

(52) Glad, Clayton (1637) – Felber, Joseph (2009) [A34]

Queens Chess Club Championship (5), 08.11.2013

[Houdini 3]

1.c4 Nf6 2.g3 c5 3.Bg2 d5 4.cxd5 Nxd5 5.Nc3 Nc7
6.Nf3 Nc6 7.0-0 e5 8.Qa4 Bd7 9.Qb3 Rb8 10.d3 Be7
11.Bd2 0-0 12.Rac1 Be6 13.Qd1 Qd7 14.Ne4 b6
15.a3 f6 16.Re1 Rbd8 Diagram



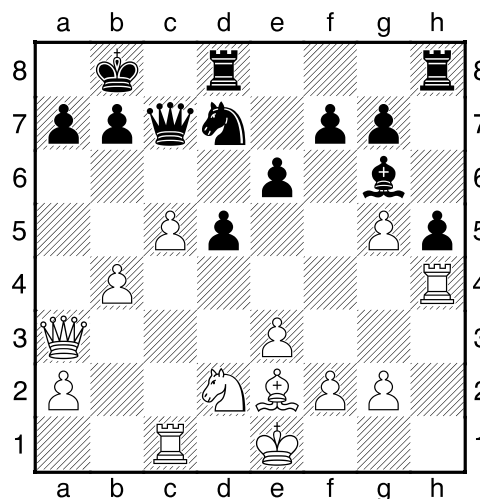
17.e3 [17.Qc2] 17...Qxd3 18.Qc2 Qxc2 19.Rxc2 Bb3
20.Rcc1 f5 21.Bc3 fxe4 22.Nxe5 Nxe5 23.Bxe5 Ne6
24.Bxe4 Ng5 25.Bc6 Nh3+ 26.Kg2 Nxf2 27.Bb5 Bd5+
28.Kf1 Nd3+ 0-1

(53) Bonin, Jay (2403) – Parhami, Payam (2125) [D00]

Queens Chess Club Championship (5), 08.11.2013

[Houdini 3]

1.d4 d5 2.Bg5 h6 3.Bh4 c6 4.c3 Qb6 5.Qb3 Bf5
6.Nd2 Nd7 7.Ngf3 e6 8.e3 Ngf6 9.Be2 Bd6 10.Bg3
Bxg3 11.hxg3 Ne4 12.Qa3 Nxd2 13.Nxd2 c5 14.g4
Bg6 15.g5 h5 16.Rh4 0-0-0 17.dxc5 Qxc5 18.b4 Qb6
19.c4 Kb8 20.c5 Qc7 21.Rc1 Diagram



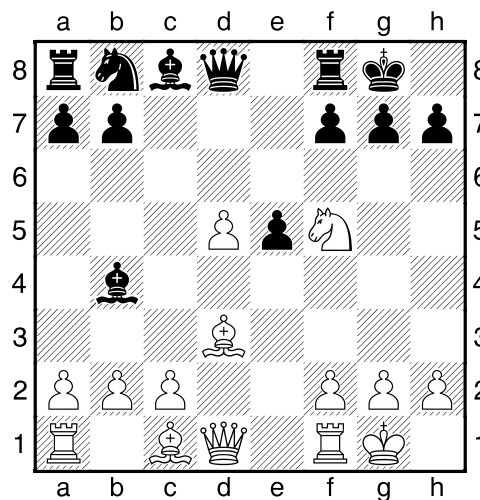
21...Ne5 [21...Rc8 22.Nb3 Ne5] 22.b5 Ng4 23.Nb3
Qe7 24.Qa5 Rc8 25.b6 axb6 26.cxb6 Rxc1+ 27.Nxc1
Rd8 28.Qa7+ Kc8 29.Qa8+ Kd7 30.Bb5+ 1-0

(54) Tamarkin, Larry (2079) – Lorenzo, Antonio (1949) [B40]

Queens Chess Club Championship (5), 08.11.2013

[Houdini 3]

1.e4 c5 2.Nf3 e6 3.d4 cxd4 4.Nxd4 Nf6 5.Nc3 Bb4
6.Bd3 e5 7.Nf5 0-0 8.0-0 d5 9.Nxd5 Nxd5 10.exd5
Diagram



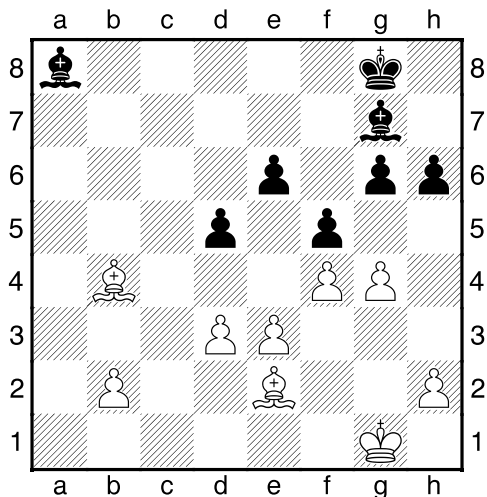
10...Qxd5 [10...Bxf5] 11.Ne7+ Bxe7 12.Bxh7+ Kxh7
13.Qxd5 Nc6 14.Be3 Be6 15.Qb5 Rab8 16.f4 a6
17.Qd3+ f5 18.fxe5 Nxe5 19.Qe2 Bc4 20.Qh5+ Kg8
21.Rxf5 g6 22.Rxf8+ Rxf8 23.Qxe5 1-0

(55) Murphy, Richard (1992) – Frumkin, Ed (2020) [A02]

Queens Chess Club Championship (5), 08.11.2013

[Houdini 3]

1.e3 g6 2.f4 Bg7 3.Nf3 d6 4.Be2 c5 5.0-0 Nc6 6.d3 Nf6 7.a4 0-0 8.Na3 d5 9.Qe1 b6 10.Qh4 e6 11.g4 Bb7 12.Ng5 Ne7 13.Bd2 Qd7 14.Nb5 h6 15.Nf3 Nc6 16.Rad1 a6 17.Ne5 Qd8 18.Na3 Nd7 19.Qxd8 Rfxd8 20.Nxd7 Rxd7 21.c3 f5 22.Nc2 b5 23.axb5 axb5 24.Ra1 Rdd8 25.Rxa8 Rxa8 26.Ra1 b4 27.Rxa8+ Bxa8 28.cxb4 Nxb4 29.Nxb4 cxb4 30.Bxb4 Diagram



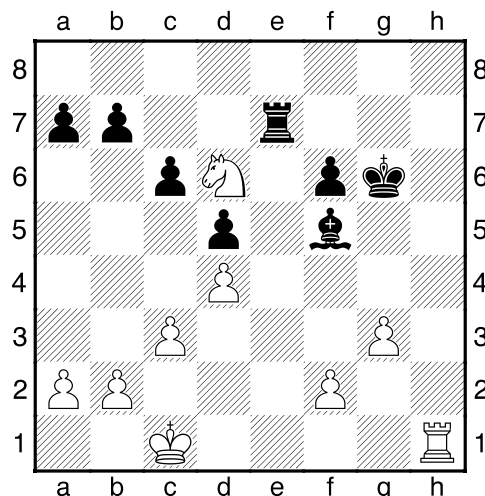
1/2-1/2

(56) Arluck, William (2063) – Harriott, Tyrell (2206) [A45]

Queens Chess Club Championship (5), 08.11.2013

[Houdini 3]

1.d4 Nf6 2.Bg5 d6 3.Bxf6 exf6 4.e3 Be7 5.Bd3 Nd7 6.Ne2 c6 7.Nd2 0-0 8.c3 Re8 9.Qc2 g6 10.h4 d5 11.h5 Nf8 12.hxg6 fxg6 13.0-0-0 Bd6 14.Rh6 Re7 15.Rdh1 Rg7 16.Nf4 Bxf4 17.exf4 Qd6 18.g3 Bd7 19.Nf3 Re8 20.Nh4 Kf7 21.Rxh7 Nxh7 22.Bxg6+ Kg8 [22...Kf8 23.Bxh7 Ke7 24.Bg6 Rh8] 23.Bxh7+ [23.Bxe8 Bxe8 24.Nf5] 23...Rxh7 24.Qxh7+ Kxh7 25.Nf5+ Kg6 26.Nxd6 Re7 27.f5+ Bxf5 Diagram



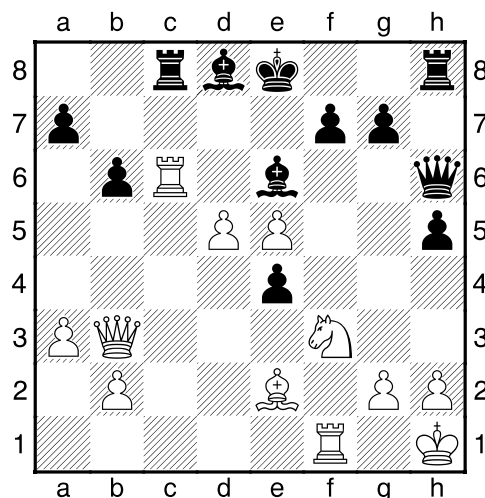
28.Nxf5 [28.Rh6+!! Kxh6 (28...Kg5 29.f4+ Kg4 30.Rh4+ Kf3 31.Nxf5) 29.Nxf5+ Kh5 30.Nxe7] 28...Kxf5 1/2-1/2

(57) Cimafranca, Edgar (1987) – Phanstiel, Jon (1716) [C00]

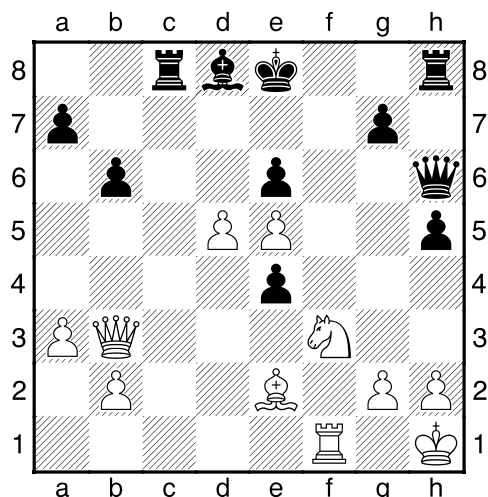
Queens Chess Club Championship (5), 08.11.2013

[Houdini 3]

1.e4 e6 2.c4 d5 3.cxd5 exd5 4.Qa4+ c6 5.e5 Qg5 6.Nf3 Qg4 7.Qb3 Qe4+ 8.Be2 Bc5 9.a3 Ne7 10.Nc3 Qg6 11.d4 Bb6 12.0-0 h5 13.Kh1 Nf5 14.Be3 Nxe3 15.fxe3 Na6 16.Na4 Bc7 17.Rac1 Nb8 [17...0-0] 18.Nc5 b6 19.Nd3 Qh6 20.Nb4 Be6 21.Nxc6 Nxc6 22.Rxc6 Bd8 23.e4 dxe4 24.d5 Rc8 Diagram



25.Rxe6+ fxe6 Diagram

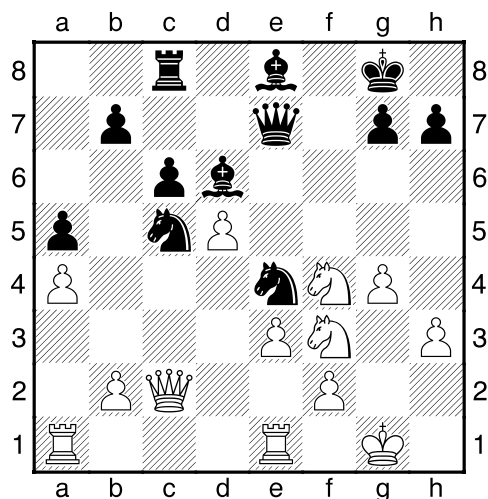


26.Bb5+ [26.Qa4+! b5 27.Ng5!! bxa4 (27...Bxg5 28.Bxb5+ Kd8 29.Qxa7) 28.Bb5+ Ke7 29.Rf7# (29.d6#)] 26...Kf8 27.Ng5+ Bf6 28.Nxe6+ Kg8 29.exf6 gxf6 30.d6 Kh7 31.Nc7 Qg7 32.Qd5 Qg6 33.Bd7 1-0

(58) Mathew, Philip (1399) – Kleinman, Jay (1851) [D45]

Queens Chess Club Championship (5), 08.11.2013
[Houdini 3]

1.d4 d5 2.c4 c6 3.Nc3 e6 4.e3 Nf6 5.Nf3 Bd6 6.Be2 Nbd7 7.0-0 0-0 8.cxd5 exd5 9.Bd3 Re8 10.Re1 Ne4 11.Qc2 f5 12.Ne2 Ndf6 13.h3 Qe7 14.Bd2 Bd7 15.a3 a5 16.a4 Rec8 17.Nf4 Be8 18.Bc3 Nxc3 19.Bxf5 Nce4 20.Bxc8 Rxc8 21.g4 Nd7? [21...Bf7] 22.Nxd5 Qe6 23.Nf4 Qe7 24.d5 Ndc5 Diagram

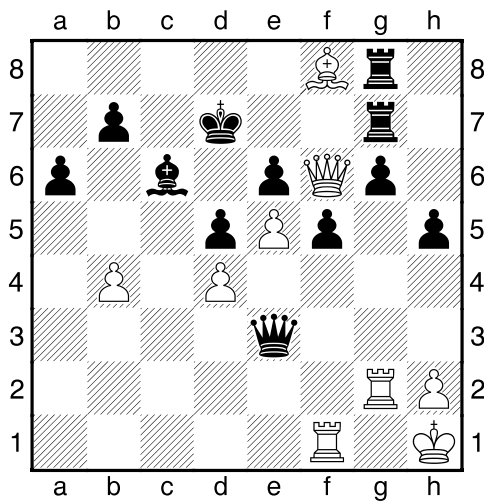


25.Ne6 cxd5 26.Nxc5 Rxc5 27.Qb3 Qf7 28.Kg2 Qxf3+ 29.Kxf3 Nd2+ 30.Ke2 Nxb3 31.Rad1 Bxa4 32.Kf1 Bc6 33.e4 d4 34.Rd3 Bb5 0-1

(59) Kopiecki, Ed (1914) – Genkin, Pavel (1849) [B15]

Queens Chess Club Championship (5), 08.11.2013
[Houdini 3]

1.e4 c6 2.d4 d5 3.Nc3 a6 4.f3 e6 5.Be3 Bb4 6.Bd3 Nf6 7.e5 Nfd7 8.f4 c5 9.Qg4 g6 10.Nf3 cxd4 11.Nxd4 Nc5 12.0-0 Nxd3 13.cxd3 Nc6 14.Nce2 Bc5 15.Rac1 Bxd4 16.Nxd4 Nxd4 17.Bxd4 Bd7 18.Qh3 h5 19.g4 Rc8 20.Bc5 Bc6 21.d4 Kd7 22.g5 Qa5 23.b4 Qxa2 24.Rf2 Qa4 25.f5 gxf5 26.g6 Rhg8 27.Rg2 fxg6 28.Qh4 Rg7 29.Qf6 Rcg8 30.Bf8 Qa3 31.Rf1 Qe3+ 32.Kh1 Diagram



32...Qh6 [32...Rh7-+] 33.Rfg1 Rxf8 34.Qxf8 Qh7 35.Qd6+ Kc8 36.Qxe6+ Bd7 37.Qd6 Bc6 38.Rxg6 Rxg6 39.Rxg6 1-0